



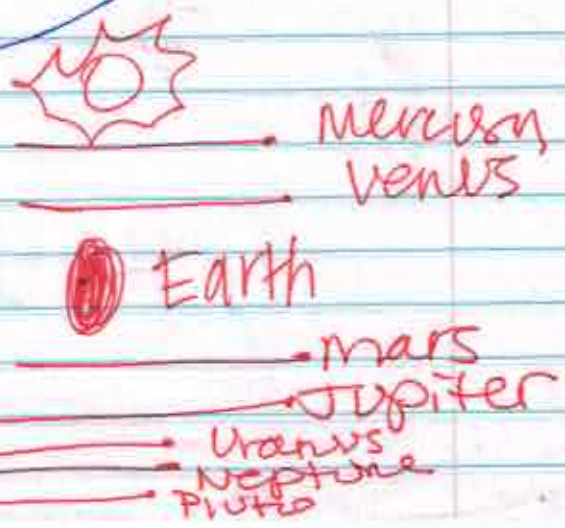
TRACIA

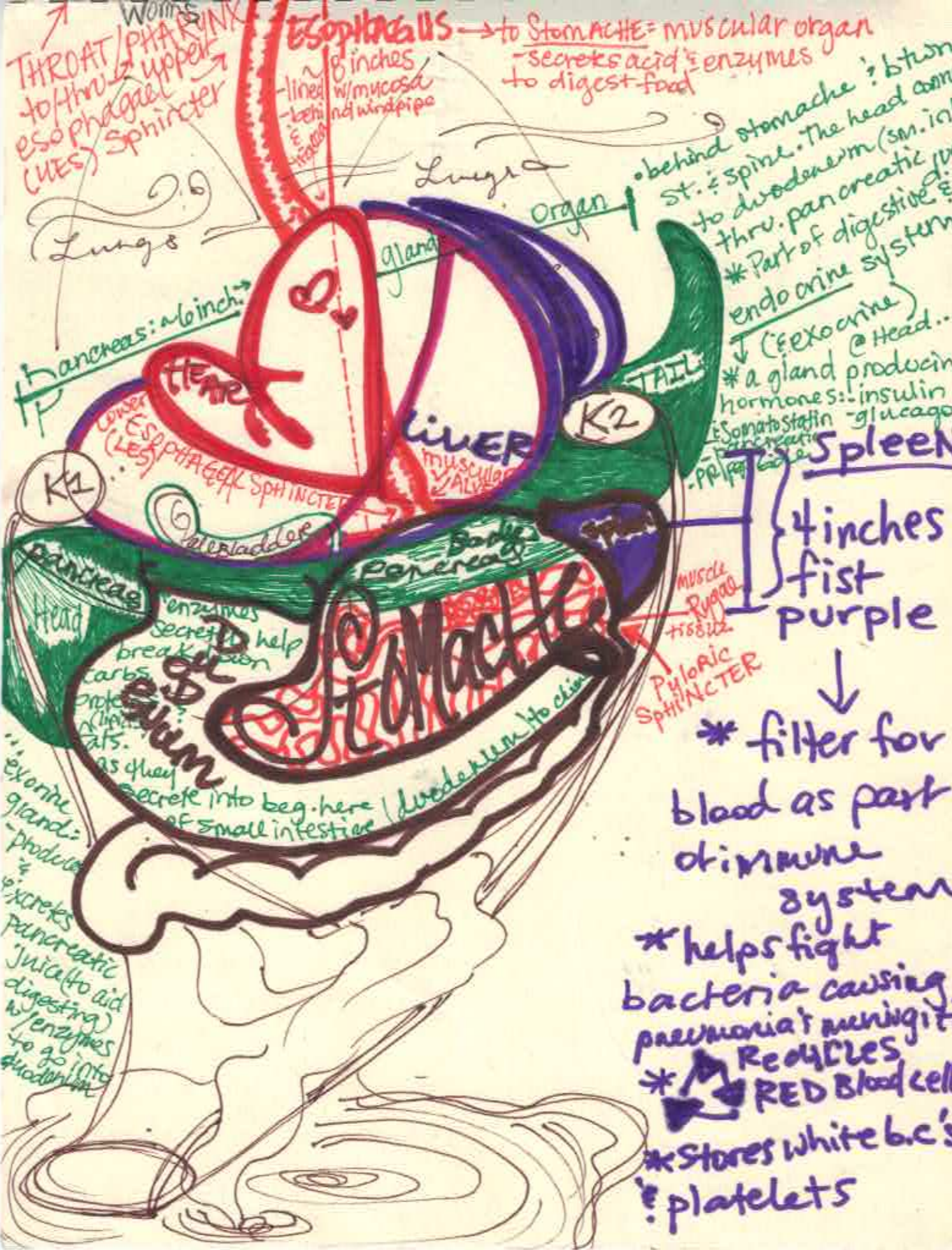
TRACIA

Veier

TRACIA

↑ Pluto
 ↑ Neptune
 ↑ Uranus
 ↑ Jupiter
 ↑ Mars (2 moons)
 ↑ Earth
 ↑ Venus
 ↑ Mercury





LIVER ^{uses specific enzymes to convert} ^{creates new Amino Acids} ^{existing ones into prot}
largest gland ^{converts wastes leaves liver via BILE STREAM}
weighs up to 3 lbs → filters more than 1 QUART of BILE
suspended behind ribs on right side that are SAFE to the body
of ABS,
spans almost entire width of body
responsible for 100's of functions
MOST complex? Active organ in body

Body's fuel supply (ex = nutrients & energy) → liver { processing, converting, distributing, maintaining }

produces ~ 1 - 1.5 quarts of bile/day
(yellow, green, brown) = Alkaline
Bitter taste (vs. Acidic)
Must combine w/ food in order for body to digest food.

ASIA : - 17,128,500 sq. miles
44,362,815 sq. kilometers





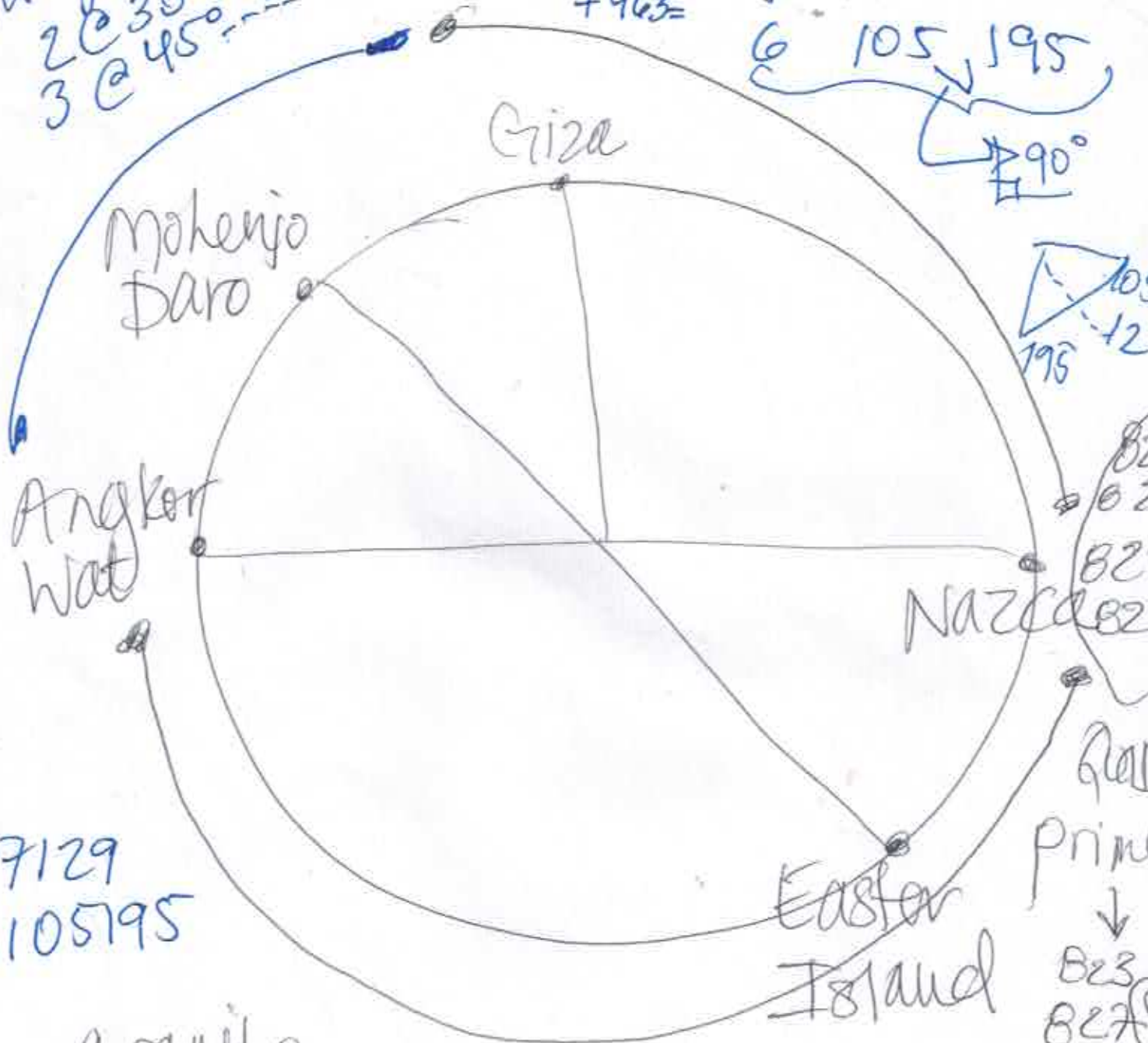
magnet 1 @ 15°
 2 @ 30°
 3 @ 45°

(Prime: 2, 3, 5, 10)

+963

7 129

6 105 195
 90°



7129
 6105195

granite

→ No change over time
 in dimension

length Δ - length $\Delta =$
 299,792,458

Hatchburg Florida
 Norman Hall
 Philadel's Grand Lodge

speed
 light

hexagram Δ
 U shaped G
 magnets

M.T. Everest/Himalayas - climbing ↑ cont.

Tops of these mts. are found fossils

trilobite family ^{sea creatures} ← ^{some more than 500 yrs. from}

29,000 ft. above

75,000 mill.

15 mill. → India & Eurasian plate
^{w/ oceanic plate}
_{plate (over)}

raise 1 inch $\frac{1}{2}$ each year.

collisions

→ have pushed Himalayas & Tibet M. ever

Cont. → ocean floor
seaplate

plate rub plate / seaf. hit seaf.

"Ring of Fire"

→ Tsunamis, Earthquakes, & Volcanoes

Hawai - 1,000's of mi's from

/ Hot Spots

Haha - smooth > 2 lava types
(stone)

Shield ^{low flat} } volcanoes
Composite _{cone tall}

↑ + than 29,000 ft ↑ after level

1949 - La Palma - 20 story high tsunami to E. US

Yellowstone - super volcano - always active
land rises & ↓ by meters ea. day

640,000 yrs. ago last eruption

8P: Tokyo

4.6 Billion yrs. ago

100 mill. yrs. (t) --- speed ↑ - rocks collide / planetoids

4.5 - 4.4 Bill. yrs. ago - lavae forms melting heat
water vapor from heat → rain

1 mill. yrs. of rain

liquid iron (magnetic shield)

2.5 bill. yrs. ago - Artica took

1.5 bill. yrs. ago

1.8 " " Artica (now E. Antarctica)

1 Billion yrs. ago Super continent → New Guinea

(after 3 mill. yrs. Sep. → then back together → became

Pangea (Antarctica & Her Sep. again @ some time)

EAST USA & Chile -

① slow solid mantle magma - burped along the surface - where plates are sep. (tectonics)

② @ other end of plates (collision zone)
what goes on there??

Olympus Mons
81,100 ft.

MARS

MAXWELL

KEA

MANNA

MONTES

30,300 ft.

VENUS

Hawaii, U.S.

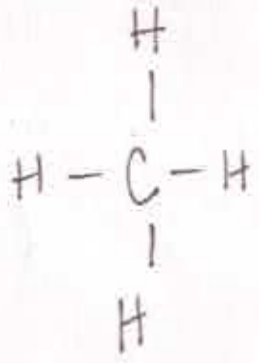
{ sea level? }

Mount Everest

Sea Level @ Everest

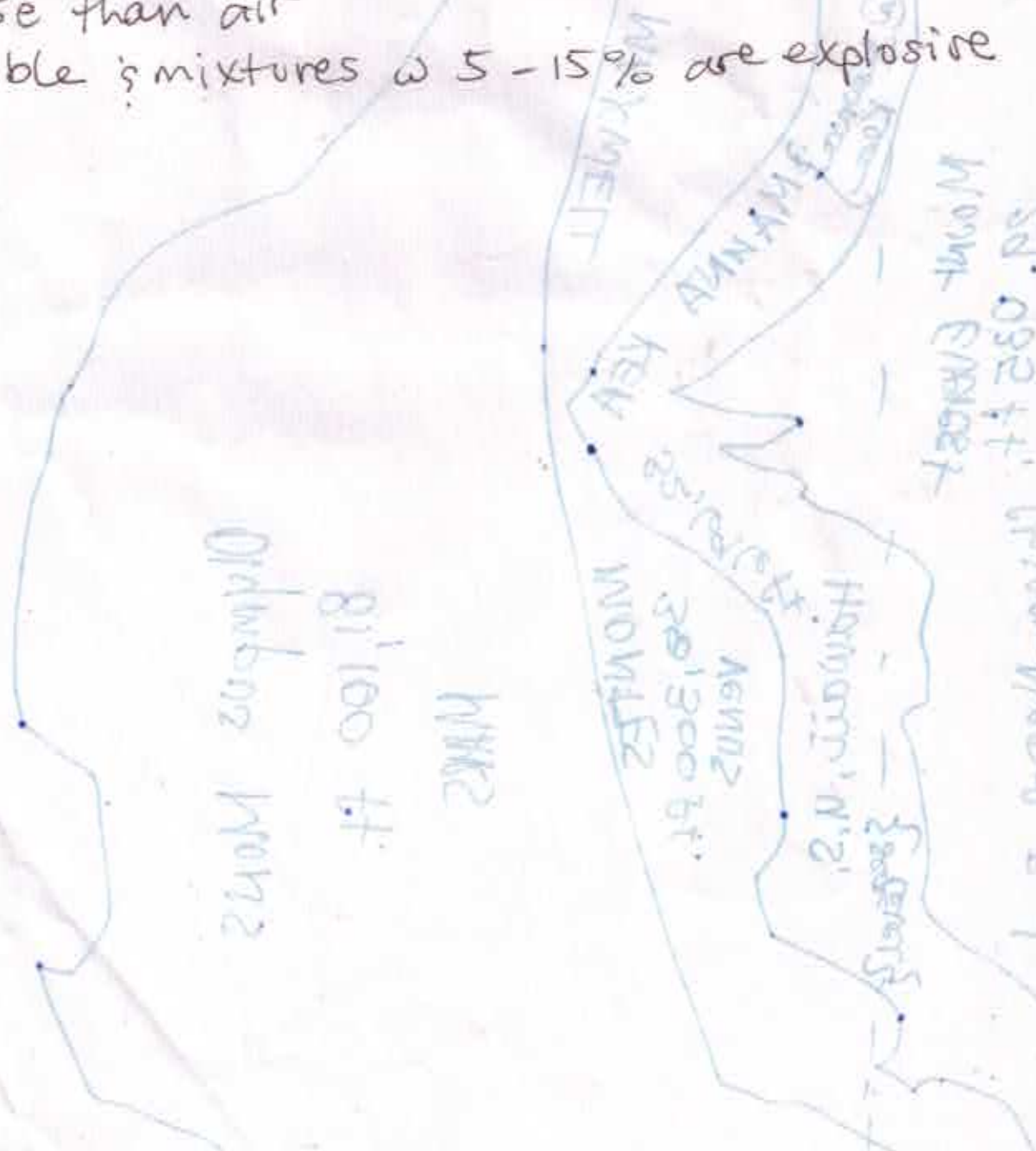
pop distribution to investigate sea level, sea level -
topography to investigate sea level, sea level -
topography to investigate sea level, sea level -
topography to investigate sea level, sea level -
topography to investigate sea level, sea level -

methane =

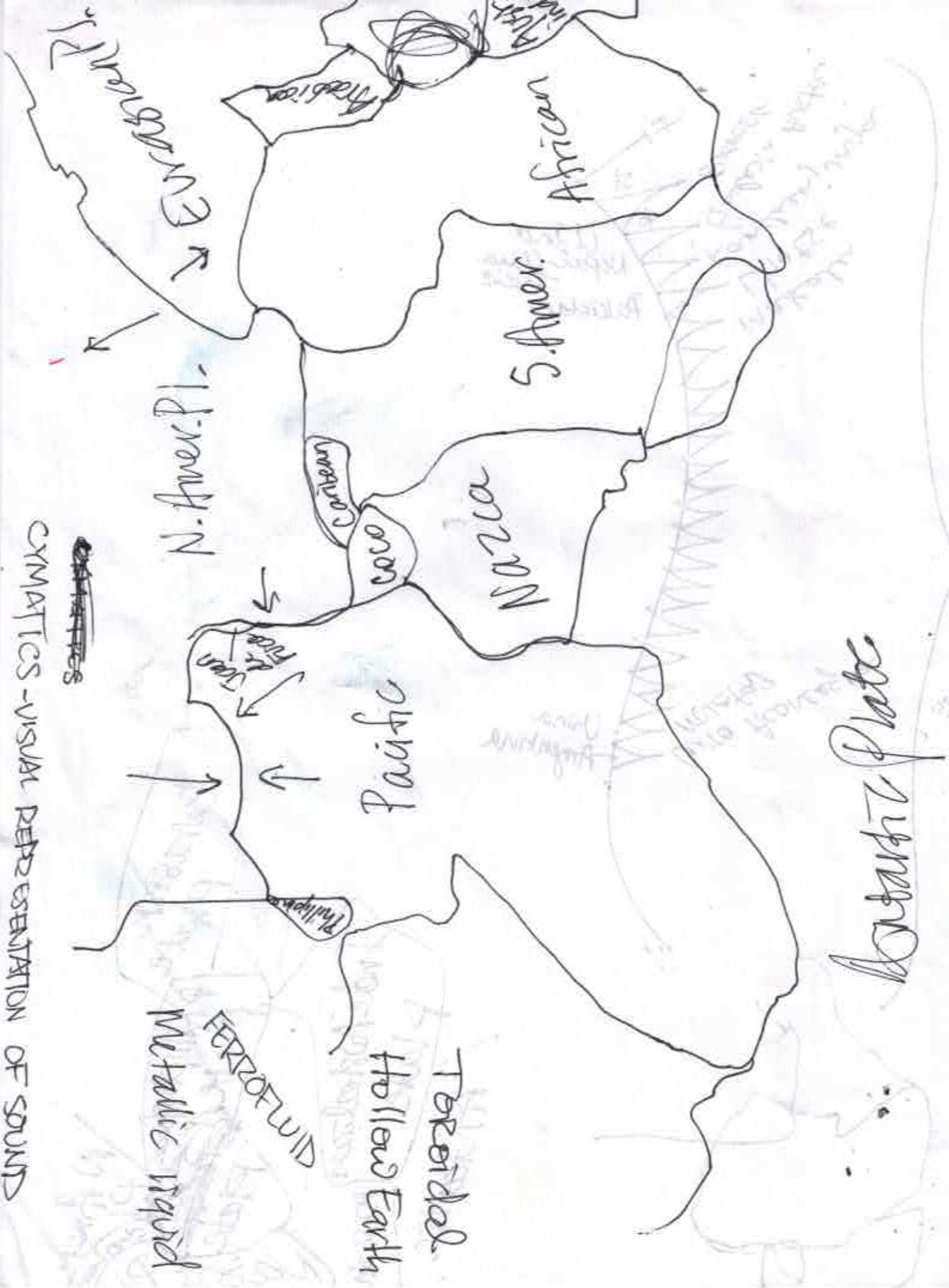


CH₄ (Barely... Solvable in water)

- Colorless, odorless, Component of natural gas
- anaerobic bacterial decomposition of plant/animal matter (such as occurs underwater) w/ marsh gas, ↳ = same thing
- less dense than air
- combustible ; mixtures w 5 - 15% are explosive



~~CRIMATICS~~
CRIMATICS - VISUAL REPRESENTATION OF SOUND



Eurasian Plate

Philippine Plate
~~Plate~~
~~Plate~~

Indo-Australian Plate

Antarctic

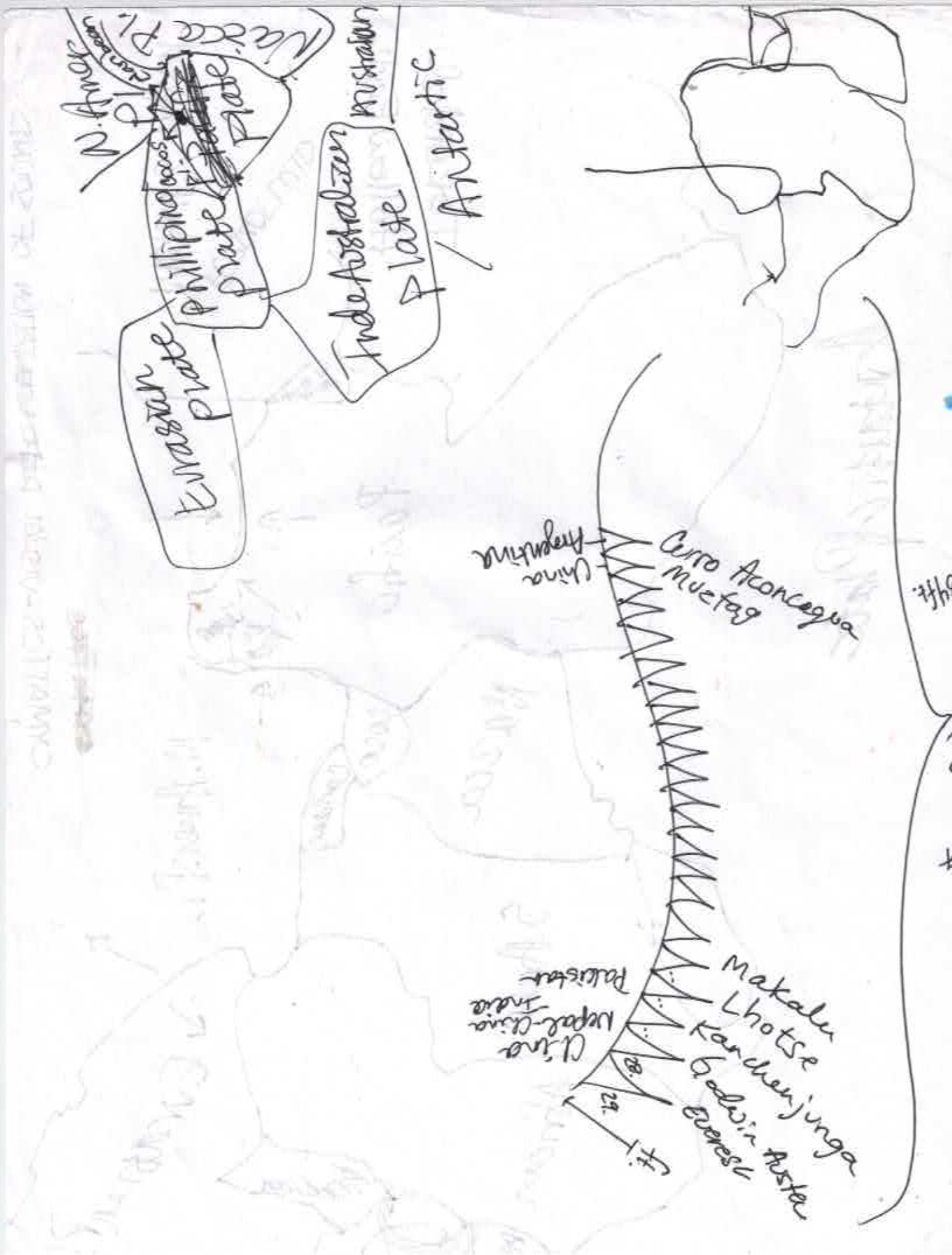
Australian

N. Amer.
Caribbean
N. Amer. Pl.
Caribbean

China
Argentina
Cerro Aconcagua
Muetag

China
Nepal-China
Pakistan
India
Makalu
Lhotse
Kanduenjunga
Gedwin
Everest
Austar

29
81
Fi





ROCKY MOUNTAINS

Missouri River

Great Falls

Columbia River
Snake River
Bitterroot Range

Idaho Falls

Sioux Falls

Great Salt Lake

Platte River

Colorado Springs

Arkansas River

Red River

Colorado River

Grand Canyon

Rio Grande
Rio Bravo

Pacific Ocean

Mississippi