

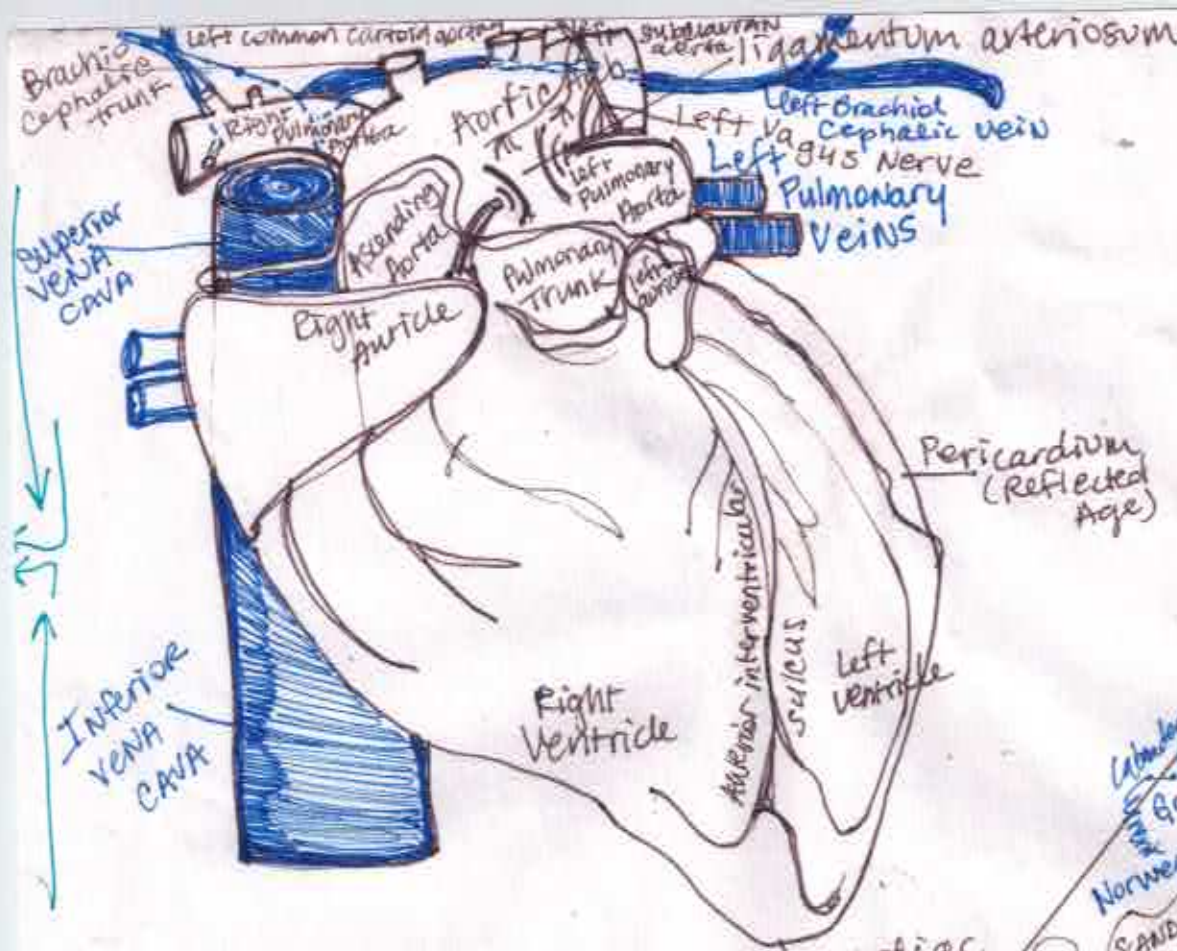


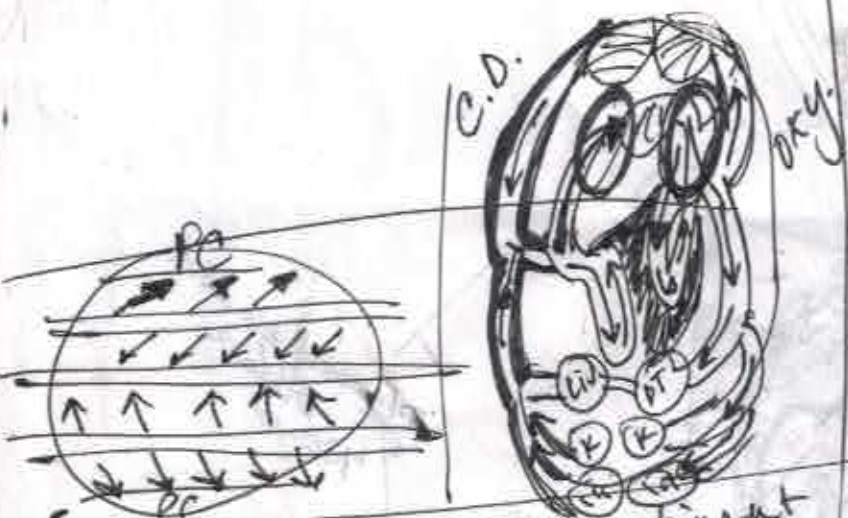
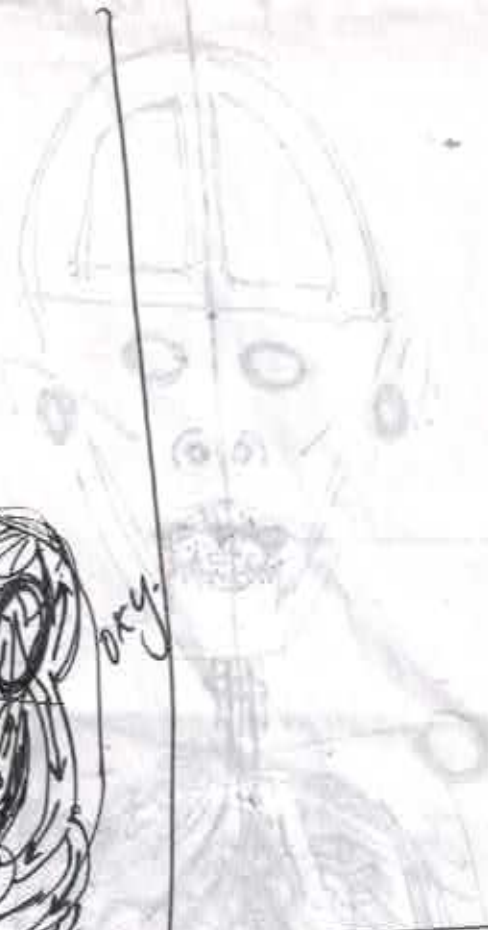


Any

150 million  
yrs. old

5





**AFRICA** - 2nd largest continent  
 - 2nd most populous (after Asia)



Nile - travels N. longest river in the world  
 4,160 mi. / Sahara: biggest desert in world  
 3,500,000 mi<sup>2</sup> / 1/3 of Africa

Congo = 2nd largest river in Africa  
 help link ppl / cities of the interior: stretches into:  
 Angola, Cameroon, Cent. Afr. Rep., Zambia.  
 - contains almost 20% world's rainforest.

Lake Victoria : 26,000 mi. <sup>2</sup> - Af.'s largest lake  
 largest tropical lake in world / 2nd largest freshwater  
 most H<sub>2</sub>O comes from direct precip. (after US's Superior) lake  
 have going North @ Jinja



Million

Kidneys filter 200 gallons of BLOOD/DAY/minute



Per each there

# RIVERS

Name	Location/Source	Outflow	Length miles — Km
• Nile	(Africa) Tributaries of Lake Victoria	Mediterranean Sea	4180 — 6690
• Amazon	Glacier fed lakes (Peru)	Atlantic Ocean	3912 — 6296
• Mississippi Missouri- Red Rock	(Montana) Source of Red Rock,	Gulf of Mexico	3710 — 5970
• Chang Jiang (Yangtze)	(China) Tibetan plateau	China Sea	3602 — 5797

Right Sympathetic Duct

Termination of Thoracic Duct

